

HEART OF AN ANGEL

Music: Modern Talking
www.amazon.de/Universe-12th-Album-Modern-Talking
Track # 5 Time 4:08 Accelerate w/ +10%
Available from choreographer

Rhythm: Hesitation Canter Waltz Phase: IV+1U (Box w/ 2 Way Underarm Turn)

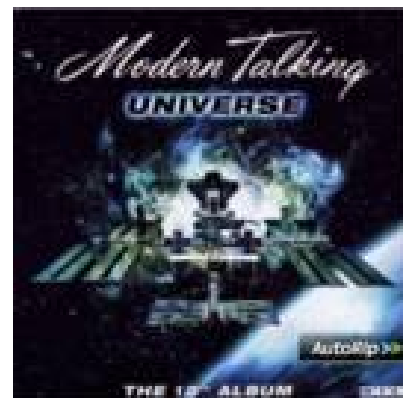
Footwork: Opposite except where (Noted)

Release Date: July 2016

Choreo: Jos Dierickx Beverlosestwg 14b2 3583 Paal Belgium

Email: jos.dierickx@telenet.be

Sequence: **INTRO ABC AB(9-17) CC A END**



INTRO

01-02 CP LOD LEAD FOOT FREE WAIT 2 MEASURES ; ;

{Wait} CP LOD ld ft free wt 2 meas ; ;

PART A

01-04 BOX w/ 2 WAY UNDERARM TURN to LOP RLOD ; ; ; ;

{Box w/ 2 Way Underarm Turn to LOP RLOD} Fwd L_{,-,-}, sd R_{,-,-}, cl L (W bk R_{,-,-}, sd L_{,-,-}, cl R); Bk R raising jnd ld hnds_{,-,-}, sd L_{,-,-}, cl R (W fwd L startg wide RF circle under jnd hnds_{,-,-}, fwd R contg RF trn_{,-,-}, fwd L compg RF trn) to mod LOP LOD [W ahead of M, ld hnds high]; Fwd L twd LOD then swivel ¼ LF to fc COH_{,-,-} (W fwd R twd LOD then swivel ¼ RF to fc WALL) to offset LOP-FCG pos_{,-,-}, sm sd R_{,-,-}, cl L; Fwd R passing W then swivel RF_{,-,-}, contg RF trn sm sd L_{,-,-}, compg RF trn cl R (W fwd L passing M and commg wide LF circle under jnd hnds_{,-,-}, sd R contg LF trn_{,-,-}, cl L compg LF trn) to LOP RLOD ;

05-08 THRU to a WHISK ; THRU SIDE BEHIND ; ROLL 3 to SCP ; SLOW SIDE LOCK ;

{Thru to a Whisk} Thru L_{,-,-}, fwd & sd R trng ½ LF stg rise to ball of ft to SCP LOD_{,-,-}, XLib (W XRib) cont to full rise ; {Thru Sd Behind} Thru R_{,-,-}, sd L to fc prtn_{,-,-}, XRib (W XLib) ; {Roll 3 to SCP} Start LF trn (W RF) sd & fwd L_{,-,-}, small sd R cont LF trn_{,-,-}, sd & fwd L cont LF trn to SCP LOD ; {Slow Sd Lk} Thru R_{,-,-}, fwd & sd L rising trng LF_{,-,-}, cl R (W Thru L trng LF_{,-,-}, sd R trng LF_{,-,-}, lk Lif) to CP DLC ;

PART B

01-04 DIAMOND TURN ; ; ; ;

{Diamond Turn} Fwd L trng LF_{,-,-}, compg ¼ LF trn sd R_{,-,-}, bk L to BJO ; Staying in BJO & trng LF bk R_{,-,-}, compg ¼ LF trn sd L_{,-,-}, fwd R ; Staying in BJO & trng LF fwd L_{,-,-}, compg ¼ LF trn sd R_{,-,-}, bk L ; Bk R in BJO trng RF_{,-,-}, sd L compg ¼ LF trn_{,-,-}, fwd R to BJO DLC ;

05-08 TELEMAR to SCP ; IN & OUT RUNS ; ; CHAIR & SLIP ;

{Telemark to SCP} Fwd L comm LF trn_{,-,-}, sd R w/ a strong LF trn_{,-,-}, sd & slightly fwd L (W bk R comm LF trn_{,-,-}, cl L [heel trn]_{,-,-}, sd & slightly fwd R) to SCP DLW ; {In & Out Runs} Trng RF fwd R_{,-,-}, sd & bk L to CP RLOD_{,-,-}, bk R (W fwd L_{,-,-}, fwd R between M's ft_{,-,-}, fwd L) to BJO RLOD ; Trng RF bk L_{,-,-}, cont trn fwd R between W's ft_{,-,-}, sd & fwd L (W trng RF fwd R_{,-,-}, cont trn sd L in frnt of M_{,-,-}, cont trn fwd & sd R) to SCP LOD ; {Chair & Slip} Ck fwd R w/bent knee_{,-,-}, rec L w/ slight LF trn_{,-,-}, sm bk R (W ck fwd L_{,-,-}, rec R swvlg 5/8 LF_{,-,-}, fwd L) to CP DLC ;

09-12 VIENNESE TURNS ; ; HOVER TELE ; THRU SYNCOPED CANTER VINE ;

{Viennese Turns} Fwd L stg LF trn_{,-,-}, sd R cont trn_{,-,-}, XLif to fc RLOD (W bk R stg LF trn_{,-,-}, sd L cont trn_{,-,-}, cl R) ; Bk R cont LF trn_{,-,-}, sd L cont trn_{,-,-}, cl R (W fwd L cont LF trn_{,-,-}, sd R cont trn_{,-,-}, XLif) to CP DLW ; {Hover Tele} Fwd L_{,-,-}, fwd R rising & trng 1/8 RF_{,-,-}, sd & fwd L to SCP LOD ; {Thru Syncoped Canter Vine} Thru R_{,-,-}, sd L, XRib (W XLib)_{,-,-}, sd L ;

13-17 WEAVE 6 to BJO ; ; OP NATURAL ; SPIN TURN ; BOX FINISH ;

{Weave 6 to BJO} Fwd R DLC_{,-,-}, fwd L stg LF trn_{,-,-}, contg trn sd & bk R to fc DRC (W fwd L trng LF_{,-,-}, sd & bk R to CP_{,-,-}, contg LF trn sd & fwd L LOD to BJO) ; Bk L LOD_{,-,-}, bk R trng LF trn_{,-,-}, sd & fwd L (W fwd R outsd ptr_{,-,-}, fwd L to CP contg LF trn_{,-,-}, sd & bk R) to BJO DLW ; {OP Natural} Fwd R stg RF trn_{,-,-}, cont trn sd & bk L_{,-,-}, bk R w/ R sd ld (W bk L trng RF_{,-,-}, fwd R between man's feet_{,-,-}, fwd L) to BJO DRC ; {Spin Turn} Stg RF upper bdy trn bk L pvtg ½ RF to fc LOD_{,-,-}, fwd R btwn W's ft heel to toe cont trn leavg L leg xtnd bk & sd_{,-,-}, rec L (W stg RF upper bdy trn fwd R btwn M's ft heel to toe pvtg 1/2 RF_{,-,-}, bk L cont trn brush R to L_{,-,-}, fwd R btwn M's ft) to CP DLW ; {Box Finish} Bk R_{,-,-}, sd & bk L trng 1/4 LF_{,-,-}, cl R to CP DLC ;

