

# I'M SO LUCKY TO SING

Music: **Helmut Lotti**

[www.amazon.com/Crooners](http://www.amazon.com/Crooners)

Cd 2 Track # 1 Time 2:21

Available from choreographer

Rhythm: **Foxtrot** Phase: **IV+2 (Curved Feather + DBL Rev Spin)**

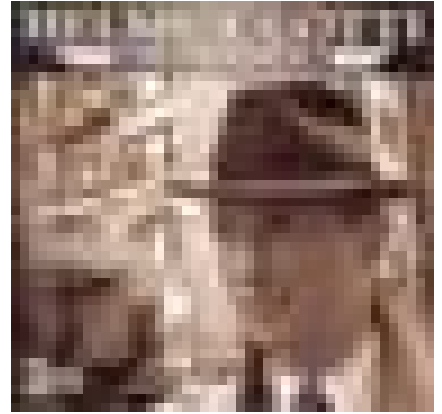
Footwork: **Opposite except where (Noted)**

Release Date: July 17

Choreo: Jos Dierickx Beverlosestwg 14b2 3583 Paal Belgium

Email: [jos.dierickx@telenet.be](mailto:jos.dierickx@telenet.be)

Sequence: **INTRO AB A(1-8) C B A(9-16) END**



## INTRO

### 01-04 BFLY POS WALL LEAD FOOT FREE WAIT 2 MEASURES ; ; ROLL 3 to SCP ; CHAIR & SLIP ;

{Wait} BFLY POS WALL 1d ft free wt 2 meas ; ; {Roll 3 to SCP} Start LF trn (W RF) sd & fwd L, -, small sd R cont LF trn, sd & fwd L cont LF trn to SCP LOD ; {Chair & Slip} Ck thru R, -, rec L, trng LF bk R (W ck thru L, -, rec R, swvl LF on R fwd L) to CP DLC ;

## PART A

### 01-04 DIAMOND TURN HALF ; ; QUICK DIAMOND 4 ; DIP BACK & RECOVER ;

{Diamond Turn 1/2} Fwd L, -, trng ¼ LF sd R, bk L ; Bk R, -, trng ¼ LF sd L, fwd R to RDW ; {Qk Diamond 4} [QQQQ] Fwd L stg to trn LF, sd R contg LF trn, bk L compg 1/4 LF trn to BJO DLW, bk R to CP LOD ; {Dip Bk & Rec} [SS]Bk L w/ flexed knee, -, rec R to CP LOD, -;

### 05-08 TELEMARK to SCP ; IN & OUT RUNS ; ; SLOW SIDE LOCK ;

{Telemark to SCP} Fwd L comm LF trn, -, sd R contg LF trn, sd & fwd L (W bk R comm LF trn bringing L ft beside R w/ no wgt, -, cont trng LF on R heel & chg wgt to L, sd & sltly fwd R) to SCP DLW ; {In & Out Runs} Trng RF fwd R, -, sd & bk L, bk R (W fwd L, -, fwd R btwn M's ft, fwd L) to BJO RLOD ; Trng RF bk L, -, contg trn fwd R btwn W's ft, sd & fwd L (W trng RF fwd R, -, cont trn sd L in frt of M, cont trn fwd & sd R) to SCP DLC ; {Slow Sd Lk} Thru R, -, fwd & sd L rising trng LF, cl R (W thru L trng LF, -, sd R trng LF, XLif) to CP DLC ;

### 09-12 REVERSE TURN ; ; WHISK ; WING ;

{Reverse Turn} Fwd L twd DLC comm LF turn, -, sd R around ptr, bk L twds LOD (W Bk R comm LF trn, -, cl L [heel turn], fwd R btwn M's ft) ; Bk R cont LF trn, -, sd & fwd L cont trn, fwd outsd ptr (W Fwd L cont LF trn, -, sd & bk R, bk L) to BJO DLW ; {Whisk} Fwd L, -, sd & fwd R, XLib (W XRib) to SCP DLC ; {Wing} Thru R, comm trng upper bdy LF, cont trng bdy LF (W fwd L com LF trn, -, fwd R arnd M, fwd L to M's L sd contg to trn upper bdy LF) to SCAR DLC ;

### 13-16 TURN LEFT & R CHASSE to BJO ; OUTSIDE CHANGE to SCP ; CHAIR & SLIP ; DBL REVERSE SPIN to DLW ;

{Trn Left & R Chasse to BJO} [SQ&Q] Fwd L trng LF, -, twd LOD & risg progly sd R/cl L, bk R BJO DRC ; {Outsd Chng to SCP} Trng LF bk L, -, bk & sd R cont LF trn, sd & fwd L (W fwd R, -, L, R) to SCP DLW ; {Chair & Slip} Repeat meas 4 Intro ; {Dbl Reverse Spin} Fwd L com to trn LF, -, sd R DLC, spin LF on ball of R bring L undr bdy beside R no wgt flexed knees (W bk R stg to trn LF, -, cl L to R [heel trn]/sd & slightly bk R cont LF trn, XLif) to CP DLW ;

## PART B

### 01-04 HOVER TELE ; CURVED FEATHER ; QUICK DBL OUTSIDE SWIVEL ; WEAVE ENDING ;

{Hover Tele} Fwd L, -, fwd & sd R rising & trng 1/8 RF, sd & fwd L to SCP DLW ; {Curved Feather} Fwd R stg RF trn, -, contg RF trn sd & fwd L, contg upper bdy RF trn fwd R outsd W (W fwd L stg slight RF trn, -, sd & bk R cont trn, bk L) to BJO DRW ; {Quick DBL Outsd Swivel} [S,- S,-] Bk L, XRif w/ no weight (W In BJO fwd R, swvl RF on ball of R foot) ending in SCP ; Fwd R, lvng L w/ no weight (W in SCP fwd L, swvl LF on ball of L foot) ending to BJO RLOD ; {Weave Ending} [QQQQ] Bk L, trng LF & blendg to CP bk R, sd & fwd L, fwd R to BJO DLW ;

### 05-08 THREE STEP ; OP NATURAL ; SPIN TURN ; FEATHER FINISH ;

{Three Step} Fwd L, -, sd & fwd R btwn W's ft, fwd L ; {OP Natural} Fwd R outsd W's feet trng RF, -, sd L twd Wall, bk R with right shoulder lead BJO (W bk L, -, cls R heel turn, fwd L outside M to BJO) ; {Spin Turn} Begin RF upper body trn bk L toeing in pivot ½ RF, -, cont trn fwd R betw W's ft, rec sd & bk L (W begin RF upper body trn fwd R heel to toe betw M's ft pivot ½ RF, -, cont trn bk on L toe, fwd R) to CP DLW ; {Feather Finish} Bk R trn LF, -, sd & fwd L compg ¼ LF trn, fwd R outsd W to BJO DLC ;

## PART C

### 01-04 OP REVERSE TURN ; HOVER CORTE ; BACK TWISTY VINE 4 ; BACK HOVER To SCP ;

**{OP Reverse Turn}** Fwd L stg LF trn, -, sd R contg trn, bk L compg 3/8 LF trn (*W bk R stg LF trn, -, sd L cont trn, fwd R outsd ptr*) to BJO RLOD ; **{Hover Corte}** Bk R stg ½ LF trn, -, cont trn sd & fwd L rising & compg trn, rec R to BJO LOD ; **{Bk Twisty Vine 4}** (QQQQ) Bk L in BJO, sd R trng to SCAR, fwd L in SCAR, sd & bk R trng to BJO ; **{Bk Hover to SCP}** Bk L, -, bk R risg sltly, rec L (*W fwd R, -, fwd & sd L trng RF risg & brushg R to L, contg RF trn sd & fwd R*) to SCP DLC ;

### 05-08 THRU SIDE BEHND ; ROLL 3 to SCP ; PROMENADE WEAVE ; ;

**{Thru Sd Behind}** Thru R, -, sd L to fc prtn, XRib (*W XLib*) ; **{Roll 3 to SCP}** Repeat meas 3 Intro ; **{Promenade Weave }** [SQQ;QQQQ] Fwd R, -, fwd L stg LF trn, contg trn sd & bk R (*W fwd L in pick up action, -, sd & bk R trng LF to CP, cont trng on R then fwd & sd L*) to BJO LOD ; Bk L, bk R twd DLC trng LF to CP, sd & fwd L twd DLW, fwd R (*W Fwd R outsd ptr, fwd L trng LF to CP, sd & bk R contg LF trn to fc COH, bk L*) to BJO DLW ;

## ENDING

### 01-04 HOVER TELE ; CURVED FEATHER ; QUICK DBL OUTSIDE SWIVEL ; WEAVE ENDING ;

**{Hover Tele}** Repeat meas 1 Part B ; **{Curved Feather}** Repeat meas 2 Part B ; **{Quick DBL Outsd Swivel }** Repeat meas 3 Part B ; **{Weave Ending}** Repeat meas 4 Part B ;

### 05-06 OP REVERSE TURN ; STEP BACK & DIP BACK & TWIST ;

**{OP Reverse Turn}** Repeat meas 1 Part C ; **{Step Bk & Dip Bk & Twist}** [S,S]Bk R, -,Bk L w/ flexed knee, -, [Q]trn upper bdy slightly LF ;