

# DREAMGIRL AT THE CHECKOUT LINE

**Music:** SoundVision & SoundHarmony  
<https://www.youtube.com/watch?v=xyAmhx6V5j0>  
Time 3:14 Available from choreographer

**Rhythm:** Two Step **Phase:** Phase: III+1U (Mod Door)

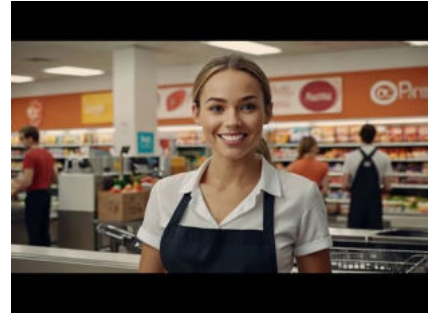
**Footwork:** Opposite except where (Noted)

Release Date: May 26

Choreo: Jos Dierickx Beverlosestwg 14b2 3583 Paal Belgium

**E-mail:** [jos.dierickx@telenet.be](mailto:jos.dierickx@telenet.be)

**Sequence:** INTRO AB ABC BRIDGE B BRIDGE(01-02) END



## INTRO

**01-05 BFLY POS WALL LEAD FOOT FREE WAIT 2 MEASURES ; ; SLOW OP VINE 4 to BFLY WALL ; ; TWIRL/VINE 2 ;**  
{Wait} Bfly Pos Wall ld ft free wt 2 meas ; ; {Slow OP Vine 4 to CP Wall} [SS;SS] Relsg trl hnds] Sd L, -, XRib *WXLlib* to LOP RLOD, -; Trng to fc Sd & fwd L, -, XRif (*WXLif*) to BFLY WALL, -; {Twirl/Vine 2} [SS] [Raisg jnd ld hnds] Sd L, -, XRib (*W twrl RF jnd ld hnds R, -, L*) to BFLY WALL, -;

## PART A

**01-04 FACE to FACE ; BACK to BACK ON AROUND to LOP ; BACK HITCH ; SCISSOR to OP LOD & LEFT HANDSHAKE ;**  
{Fc to Fc} Sd L, cl R, trng 3/8 LF sd & fwd L to V-BK-TO-BK, -; {Bk to Bk on Around to LOP} Sd R, cl L, sd & bk trng to L-OP RLOD, -; {Bk Hitch 3} Bk L, cl R, fwd L, -; {Scissor to OP Lod & lft Hndshk} Fwd R trng LF to fc ptr, cl L, XRif swiv to OP LOD & lft Hndshk, -;

**05-08 START MODIFIED DOOR/M UNDERARM PASS ; /W OUTSIDE ROLL ; /M UNDERARM PASS ; / W TURN to CP ;**  
{Start Mod Door/M Undrm Pass} [Lft Hndshk for the next 4 meas] [SS] Rk sd L, -, rec R lft hnds raisg to M undrm pass [No Trn], XLif ifo W jnd lft hnds down (*W rk sd R, -, rec L raisg lft hnds, XRif* to Tandem M in Front jnd lft hnds down, -; {Slidg Door /W Outsd Roll} [SS] Rk sd R, -, rec L jnd lft hnds to lead W roll RF trn fc COH, cont leadg W roll full trn XRif ibo Wf (*W rk sd L, -, rec R trn 1/2 RF, sd L cont trn 1/2 R, cl R*) to Tandem/W ifo M, -; {Finish Door/M Undrm Pass} Repeat Meas 5 of Part A ; {Slidg Door/W Trn to CP} Sd R, -, rec L jnd lft hnds lead to W Trn 1/2 RF to fc M, cl R (*W rk sd L, -, rec R trn 1/2 RF to fcg M, cl L*) to CP LOD ;

**09-12 DIP BACK & RECOVER to CP LOD ; PROGRESSING SCISSORS SCAR & BJO CHECKING ; ; START WHALETAIL ;**  
{Dip Bk & Rec CP Lod} Rk bk L w/ soft knee leaving R leg extended, hold, rec R (*W fwd R, hold, rec L*) to CP LOD, -; {Prog Scissors Scar & Bjo Checkg} Sd L trng sltly RF, cl R, XLif to SCAR DLW, -; Trng LF sd R, cl L, XRif to BJO DLC ckg, -; {Start Whaletail} [QQQQ] XLib, sd R trng RF, fwd L w/ lft shldrldg, lk Rib to BJO DLW ;

**13-16 FINISH WHALETAIL ; WALK & FACE & CP ; BOX ; ;**  
{Finish Whaletail} [QQQQ] Sd L comm LF bdy trn, cl R compg 1/4 LF bdy trn, XLif, sd R w/ 1/8 RF bdy trn to BJO LOD ; {Walk & Fc & CP} Fwd L, -, trng RF to fc ptr fwd R to CP WALL, -; {Box} Sd L, cl R, fwd L, -; Sd R, cl L, bk R to CP WALL, -;

## PART B

**01-04 STROLLING VINE ; ; ; ;**  
{Strolling Vine} [SS] In CP Sd L, -, XRib to mom SCAR, -; Sd L, cl R, fwd L trng 1/2 LF to CP COH, -; [SS] Sd R, -, XLib to mom BJO, -; Trng RF sd R, cl L, fwd R trng RF to BFLY pos WALL, -;

**05-08 SCISSORS SCAR & BJO CHECKG ; ; FISHTAIL ; WALK & FACE to BFLY [2<sup>de</sup> TIME: CP] ;**  
{Scissors SCAR & BJO Checkg} Sd L, cl R, XRif to SCAR, -; Sd R, cl L, XLif to BJO & Checkg, -; {Fishtail} [QQQQ] XLib, sd R trng RF, fwd L w/ lft shldr ldg, lk Rib to BJO DLW ; {Walk & Fc to BFLY} Fwd L, -, trng RF to fc ptr fwd R to BFLY WALL, -;

**09-12 FACE to FACE ; ROCK SIDE & RECOVER ; BACK to BACK ; ROCK SIDE & RECOVER ;**  
(Fc to Fc) Sd L, cl R, relsg ld hnds & trng 3/8 LF sd & fwd L to V bk-to-bk pos, -; (Rk Sd & Rec) [SS] Fwd & sd R, -, rec L, -; (Bk to Bk) Twds LOD sd R, cl L, trng 3/8 RF sd & fwd R, -; (Rk Sd & Rec) [SS] Sd L, -, rec R to CP WALL, -;

**13-16 HITCH APART ; SCISSOR THRU ; 2 TURNING TWO'S ; ;**  
{Hitch Apt} Bk L, cl R, fwd L (*W bk R, cl L, fwd R*) to CP WALL, -; {Scissor Thru} Sd R, cl L, XRif (*W XLif*) to CP WALL, -; {2 Trng Two's} Sd L stg RF trn, cl R, bk L compg 1/2 RF trn, -; Sd R contg RF trn, cl L, fwd R contg RF trn to BFLY WALL, -;

**PART C**

**01-04 VINE 3 ; WRAP the LADY ; UNWRAP the LADY ; CHANGE SIDES :**

**{Vine 3}** Sd L, XRib (*W XLib*), sd L ckg, -; **{Wrap in 3}** [Raisg jnd ld hnds] Sd R, XLib trng ¼ LF, sd & bk R (*W trng ¾ LF undr jnd ld arms L, R, L*) to WRP LOD ; **{Unwrap}** [Relsg ld hnds] ip L, R, L (*W unwraps RF R, L, R ckg*) to OP LOD **{Chng Sides to BFLY}** [Raisg trl hnds] Circ ½ CW arnd W fwd R, L, R (*W trn ½ CCW under raised hnds L, R, L*) to BFLY COH ;

**05-08 To RLOD VINE 3 ; WRAP THE the LADY ; UNWRAP the LADY ; CHANGE SIDES :**

**{To RLOD Vine 3}** To RLOD Repeat meas 1 Part C ; **{Wrap in 3}** Repeat meas 2 Part C to WRP RLOD ; **{Unwrap}** Repeat meas 3 Part C to OP RLOD ; **{Chng Sides to BFLY}** Repeat meas 4 Part C to BFLY WALL ;

**09-12 VINE 2 & FACE to FACE ; ; VINE 2 & BACK to BACK ; ;**

**{Vine 2 & Fc to Fc}** [SS] Sd L, -, XRib (*W XLib*), -; Sd L, cl R, trng 3/8 LF, sd & fwd L to almost BK-TO-BK, -; **{Vine 2 & Bk to Bk}** [SS] Sd R, -, XLib (*XRib*), -; Sd R, cl L, trng 3/8 RF sd & fwd R to CP WALL, -;

**13-16 LEFT TURNING BOX ; ; ; ;**

**{Lft Trng Box}** Sd L, cl R, fwd L to CP LOD, -; Sd R, cl L, bk R to CP COH, -; Sd L, cl R, fwd L to CP RLOD, -; Sd R, cl L, bk R to BFLY WALL, -;

**BRIDGE**

**01-04 CIRCLE BOX ; ; SLOW OP VINE 4 to BFLY WALL ; ;**

**{Circle Box}** [Raisg ld hnds] Sd L, cl R, fwd L (*W trn CW under jnd ld hnds fwd R, L, R*), -; Sd R, cl L, bk R (*W RF cont CW trn under jnd ld hnds fwd L, R, L*) to BFLY WALL, -; **{Slow OP Vine 4 to CP Wall}** Repeat meas 4 Intro ;

**ENDING**

**01-02 SLOW OP VINE 2 APART to FACE & POINT to PARTNER & EXTEND LEAD ARMS ; ;**

**{Slow OP Vine 2 Apt to Fc & Pnt to ptr & Extend arms}** SS;SS] Relsg trl hnds] Sd L, -, XRib (*W XLib*) to LOP RLOD, -; Trng to fc Apart L, -, Point R to the ptr & extend ld hnds up & out, -;